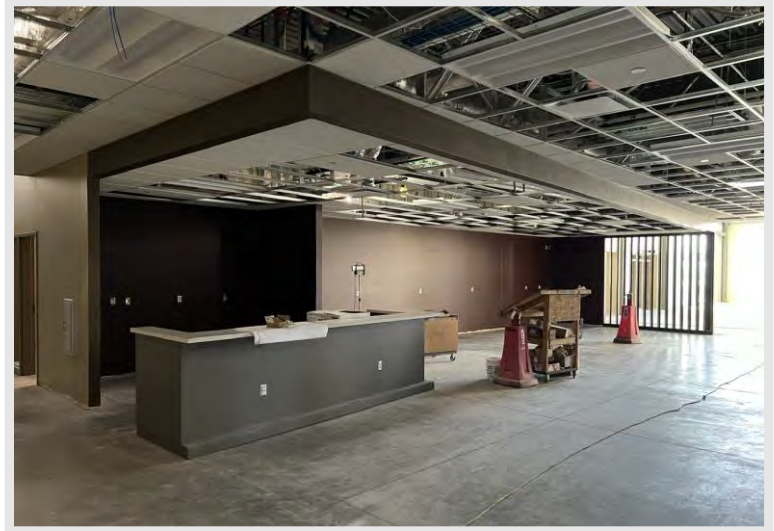


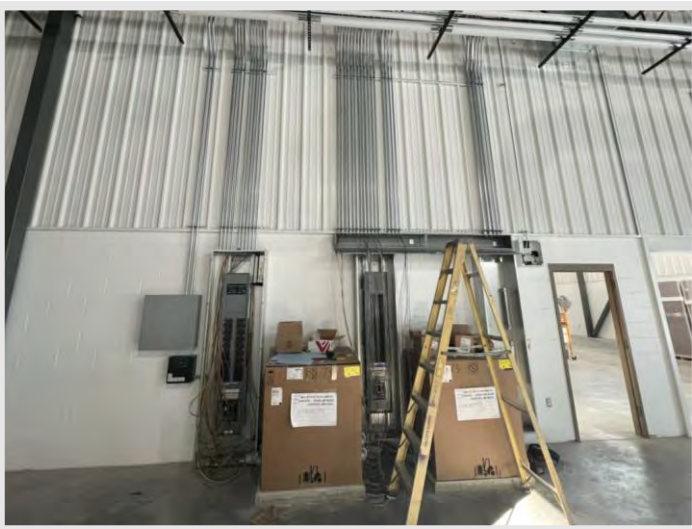
What's Happening:

The work continues inside, even with the cold and frigid weather the past few weeks! Mechanical, Electrical, and Plumbing (MEP) rough-in continues in the large lab spaces. More ductwork, conduits, piping and insulation are being installed each day by crews onsite. Additionally, connections to the MEP equipment in back of house spaces progressed. The ceiling grid has been installed throughout and tectum panel installation will complete in the coming weeks. Soon, the placement of acoustical ceiling tile (ACT) into the grid will commence along throughout the three phases of the building.

The painters have added the paint accents on walls throughout the building and wall coverings have been installed. Soon the Machine Tool Technician Lab will be masked off and the roof deck (ceiling) of the lab will be painted. Restroom partitions have been installed throughout the project in the past week. Aluminum casework is set to be installed in the coming weeks and will provide more finishes to the spaces!



This is a view of the Student Lounge area, notice the casework that was recently installed in this space.



Notice all the conduit being ran from the panels in the Machine Tool Technician Lab.



Findorff has installed the restroom partitions throughout the project in the previous week.

DID YOU KNOW?

Electricians use conduit, which is a tube, made to run their electrical wires through. The most common type of conduit is electrical metallic tubing (EMT) conduit, but conduit can also be made of plastic. Conduits are meant to protect wiring from damage, which is necessary in commercial and industrial applications. See the conduits being run by the electrician in the above photo of the Machine Tool Technician Lab.

Questions?

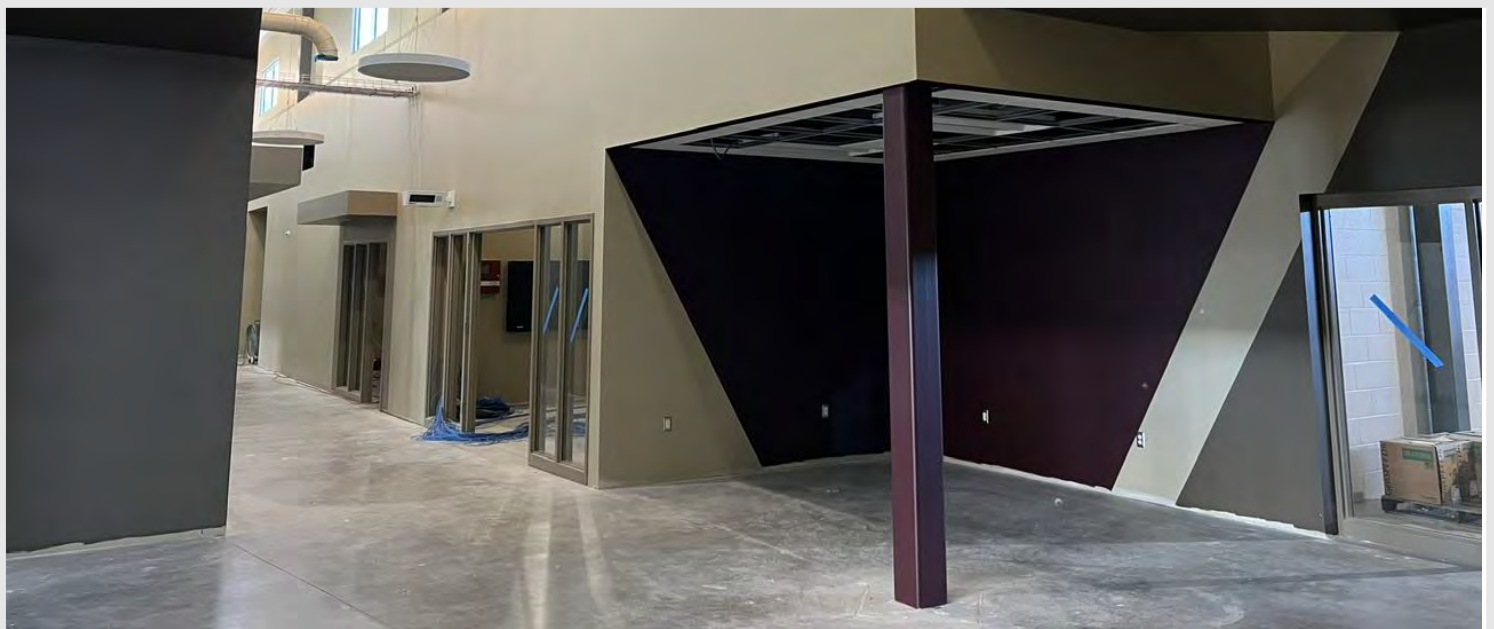
Project Manager, Matt McDonald / (608)-301-6169 / mmcdonald@findorff.com



The aluminum storefront doors were installed at the front of the building, and soon the metal composite material panel install will complete.



The mechanical, electrical, and plumbing installs are ongoing in the large lab spaces - pictured above is the Welding & Metal Fab. Lab.



The Mid-State colors have brought the walls to life throughout the main corridor!

Questions?

Project Manager, Matt McDonald / (608)-301-6169 / mmcdonald@findorff.com