

What's Happening:

Work has continued moving forward as we approach the holiday season! Mechanical, electrical, and plumbing (MEP) rough-in's are working in sequence three rooms with ceilings. Also, the MEP trades have rough-in's ongoing in the back-of-house and large lab spaces throughout the building. MEP equipment curbs were poured this week and equipment will soon be set.

The painting of walls has completed in sequences one to three, and the painters have started sealing concrete floors, which will continue in the weeks ahead. Ceiling grid installation continues working from sequence one to two. The ceiling installer has also completed tectum panel installation in the main corridor and is now working their way through the Materials Lab. The sheets of interior liner panel went up quickly in the lab spaces and brought a clean finished look to the walls! The interior liner panel is being trimmed out by installers and soon will complete. In the coming weeks, we will see some casework starting to be installed throughout the project.

The Findorff team wishes everyone a safe and happy holidays!



Notice the pre-engineered ceiling baffles that were installed in the atrium, they are supported from the metal decking above.



The sheets of white, interior metal liner panel has been installed above the CMU masonry walls throughout the labs.



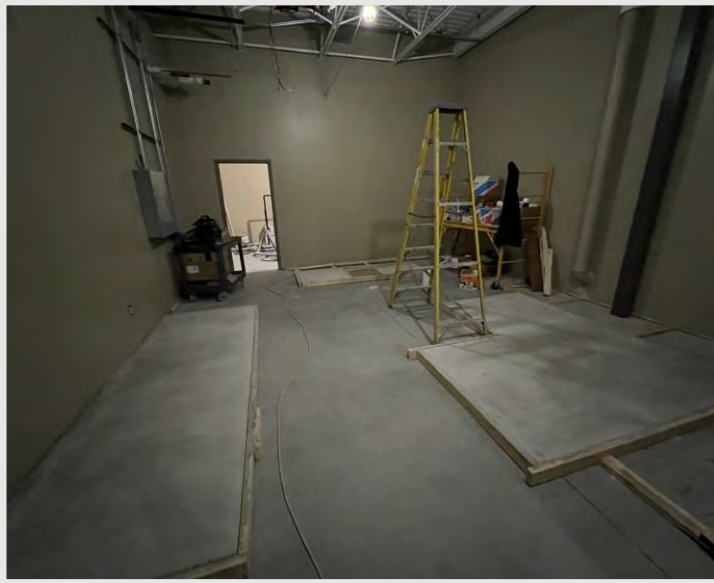
The restrooms have started to receive the plumbing fixtures throughout the building.

DID YOU KNOW?

Pre-engineered ceiling baffles, like the ones installed in the Atrium space, are used to provide noise reduction in the space, and serve as a great aesthetic. Pre-engineered ceiling baffles are recognized for their modular sizing, easy installation & maintenance, and as a cost-effective solution for reducing noise levels in buildings

Questions?

Project Manager, Matt McDonald / (608)-301-6169 / mmcdonald@findorff.com



Equipment pads were poured in the back of house spaces, and soon we will see equipment begin to install in these areas.



Casework was delivered to site and has been distributed throughout the site. Installation will occur in the coming weeks.



Above shows ceiling grid installed in the Community Room. You can also see that lay-in light fixtures are starting to be installed and connected by the electrician and the lay-in diffusers are being installed and connected to the ductwork systems by the mechanical contractor.

Questions?

Project Manager, Matt McDonald / (608)-301-6169 / mmcdonald@findorff.com