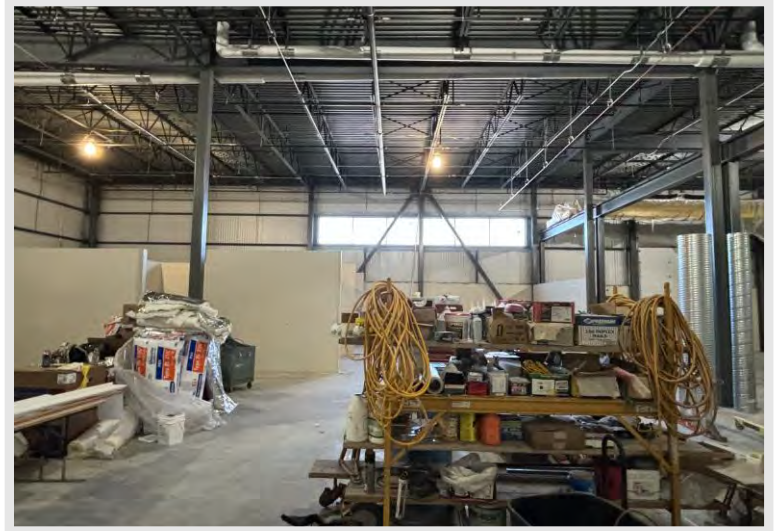


What's Happening:

Mechanical, electrical, plumbing, and fire protection rough-in's are continuing to work in sequence three and the large lab spaces throughout the building. Painting is wrapping up on walls and ceilings in sequence three of the building. Work will continue for the painters with the exposed steel painting, sealing of floors, and the painting of the large lab spaces. Ceiling grid installation has started in sequence one and will continue working throughout this area in the coming weeks. Additionally, tectum panel installation has started their work attaching to the exposed roof deck and trusses - these panels provide sound attenuation in the spaces. Interior liner panel work has kicked off in the large lab spaces and will continue to close the walls. A lot more work is coming in the months ahead!

For the most part, work around the site has cooled off for the winter and we will not see much happen outside until next spring. Insulation and metal composite material panel installation is the last to wrap up and is currently working around the upper atrium.



The welding booths in the Welding & Metal Fab. Lab have been painted and mechanical, electrical, and plumbing work is ongoing in the space.



The ceiling grid install is underway in sequence one of the building and will continue in the coming weeks.



Overall view of the building from the southwest corner of the site.

DID YOU KNOW?

Mechanical roof top units, known as RTU's are a type of heating, ventilation, and air condition (HVAC) system that is generally found on commercial buildings. RTU's are a packaged system that provide heating and cooling equipment all in one compact unit. This project has six roof top units to serve a variety of zones throughout the building.

Questions?

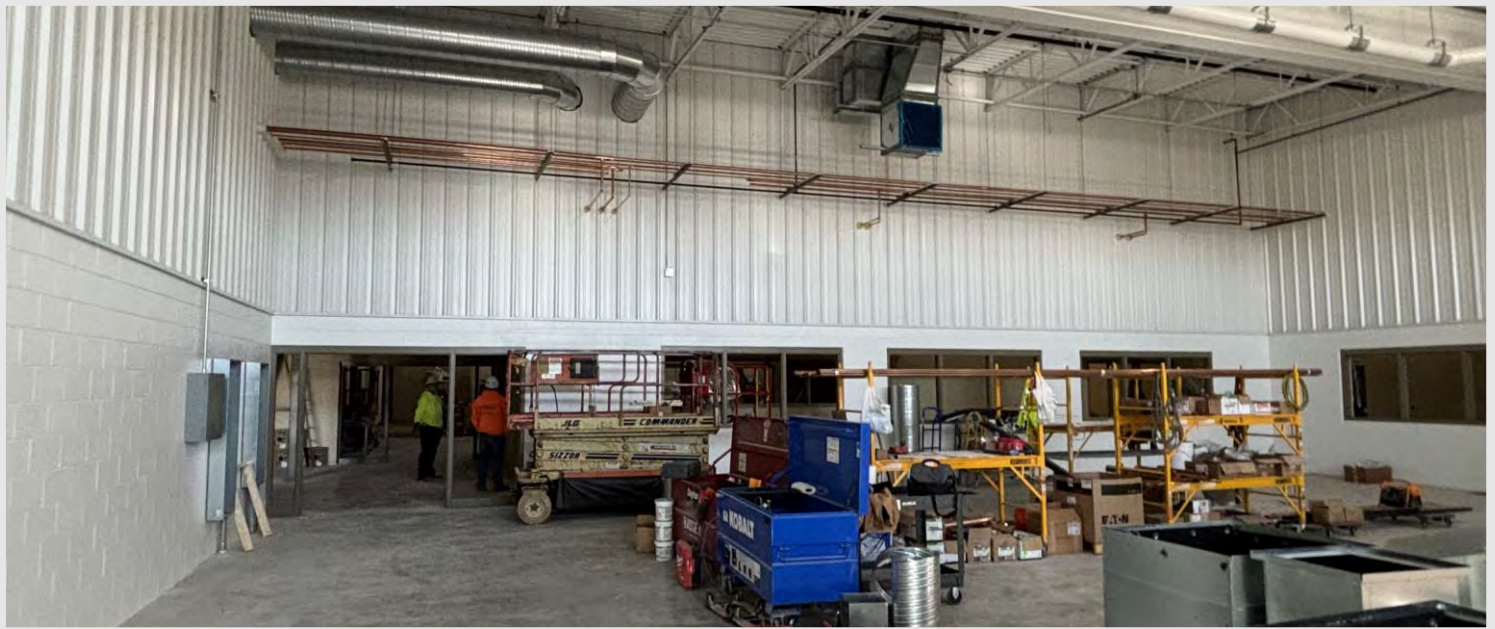
Project Manager, Matt McDonald / (608)-301-6169 / mmcdonald@findorff.com



Insulation and metal composite material panel install continues to work around the main entrance area and upper atrium.



One of the six mechanical roof top unit's (RTU's) that was set into place on the roof via a crane in the past month.



The interior metal liner panel has gone up quickly in the Automation & Controls Lab – this starts to bring the finished look to the space!

Questions?

Project Manager, Matt McDonald / (608)-301-6169 / mmcdonald@findorff.com