

What's Happening:

At the interior of the building, the different trades continue moving forward with installations. Drywall taping and finishing is working in sequence three of the building and is set to complete work in the coming weeks. Mechanical, electrical, plumbing, and fire protection trades are installing overhead throughout the building and will continue in coming months. Mechanical and plumbing trades are preparing to set some select equipment in the coming weeks and spaces will stage more materials in preparation. The painters are continuing from sequence one into sequence two of the project with more work ahead. Tile installation at all restrooms has completed.

At the exterior, the masons have completed the stone veneer installation around the atrium main entryway. The masonry was washed throughout the site and soon will be caulked, and demobilization for the masons will occur. Installation of foam insulation around the upper atrium continues and metal composite material panels are starting to be installed. As we go into the winter, less work will take place on the exterior and the focus of work will be the at the inside of the building.



Some mechanical equipment is starting to be staged in 'back of house' spaces and we will see some equipment installs in the coming months.



Ductwork is being insulated as work progresses and cable tray installation has kicked off in the past week.



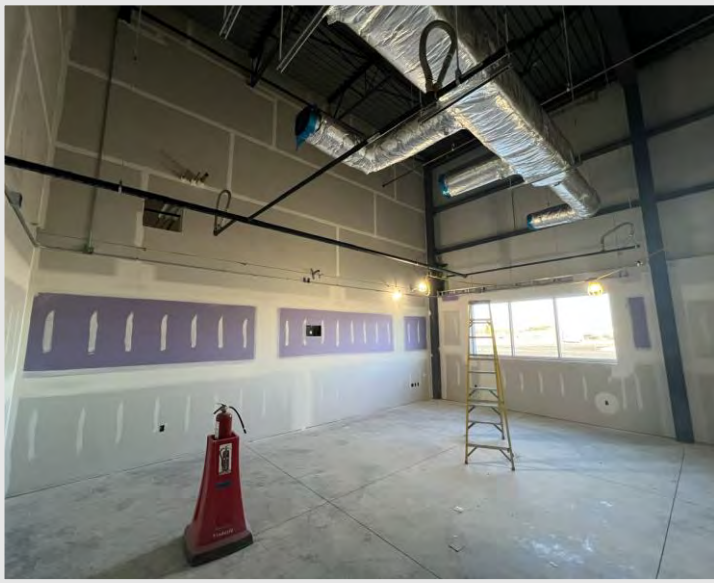
Painting of exposed steel has started in some areas around the building and painting will continue throughout the project.

DID YOU KNOW?

Cable tray was first introduced in the 1940's and has evolved into several different types throughout the decades. Seen on this project, in the above photo, is wire mesh cable tray, also known as basket cable tray. These types of wire mesh cable trays are commonly used for fiber optics, low voltage, and telecommunication cables.

Questions?

Project Manager, Matt McDonald / (608)-301-6169 / mmcdonald@findorff.com



Drywall taping and finishing is starting to wrap up in sequence three of the building – these areas will soon see paint!



The mechanical Roof Top Units (RTUs) are being staged on site in preparation for setting them in place in the coming weeks.



The masons have completed the stone veneer at the main entry and scaffolding has been removed as their demobilization takes place. Notice that metal composite material (MCM) panel installation has started at the upper atrium.

Questions?

Project Manager, Matt McDonald / (608)-301-6169 / mmcdonald@findorff.com