

What's Happening:

The interior walls have taken shape and now insulation and drywall installation has started at the west side of the building. Mechanical, electrical, and plumbing trades continue to work on in-wall rough-ins ahead of drywall to the west. The masons have moved back to the exterior to continue the brick face near the main entrance and continue into the coming weeks. Board insulation has nearly completed around the lower level as we continue to enclose the building and metal panel install is starting soon. Concrete sidewalks around the building were completed to make ready for the coming asphalt.

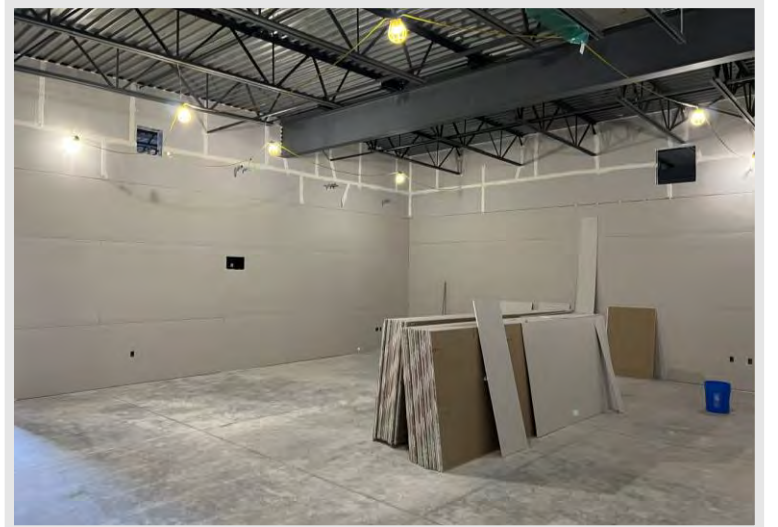
At the interior, more insulation and drywall installation is ahead with taping and finishing to start as we follow sequence. Some overhead rough-ins of mechanical, electrical, plumbing, and fire protection systems will start to overlap the in-wall rough-ins. At the exterior, aluminum storefront and glazing continues, and overhead door install is beginning next week as we work on enclosure. Preparation of grading for the first course of asphalt is occurring so the installation of the binder course can happen in the coming weeks.



The masons have started the exterior brick and are utilizing scaffolding to work their way up the wall.



Insulation has been installed in some interior walls of future high-story lab areas.



Drywall board install is ramping up and the walls are getting sealed up starting at the west end of the building.

DID YOU KNOW?

R-Value is a measure of an insulating material's resistance to conductive heat flow. The higher an R-Value, the more effective the insulation is. On exterior walls around this project, polyiso insulation, foam-filled block, and insulated metal panel are used as methods to achieve a higher R-value per inch compared to traditional fiberglass batts.

Questions?

Project Manager, Matt McDonald / (608)-301-6169 / mmcdonald@findorff.com



The west restrooms have received tile backerboard, which is water-resistant and used in wet areas like this, where future toilets will go.



Aluminum storefront and glazing is occurring, and you can see the main entrance taking form in this photo!



Foam board insulation is nearing completion at the west elevation and the north elevation. We will see metal panel being installed over these areas in the coming weeks, giving us a glimpse at the actual finishes of the building exterior.

Questions?

Project Manager, Matt McDonald / (608)-301-6169 / mmcdonald@findorff.com